



# LANDSIDE ENGINEERING PROJECTS 2020

MICHAEL CLOUD, P.E.  
LANDSIDE ENGINEERING SUPERVISOR  
NOVEMBER 13, 2019

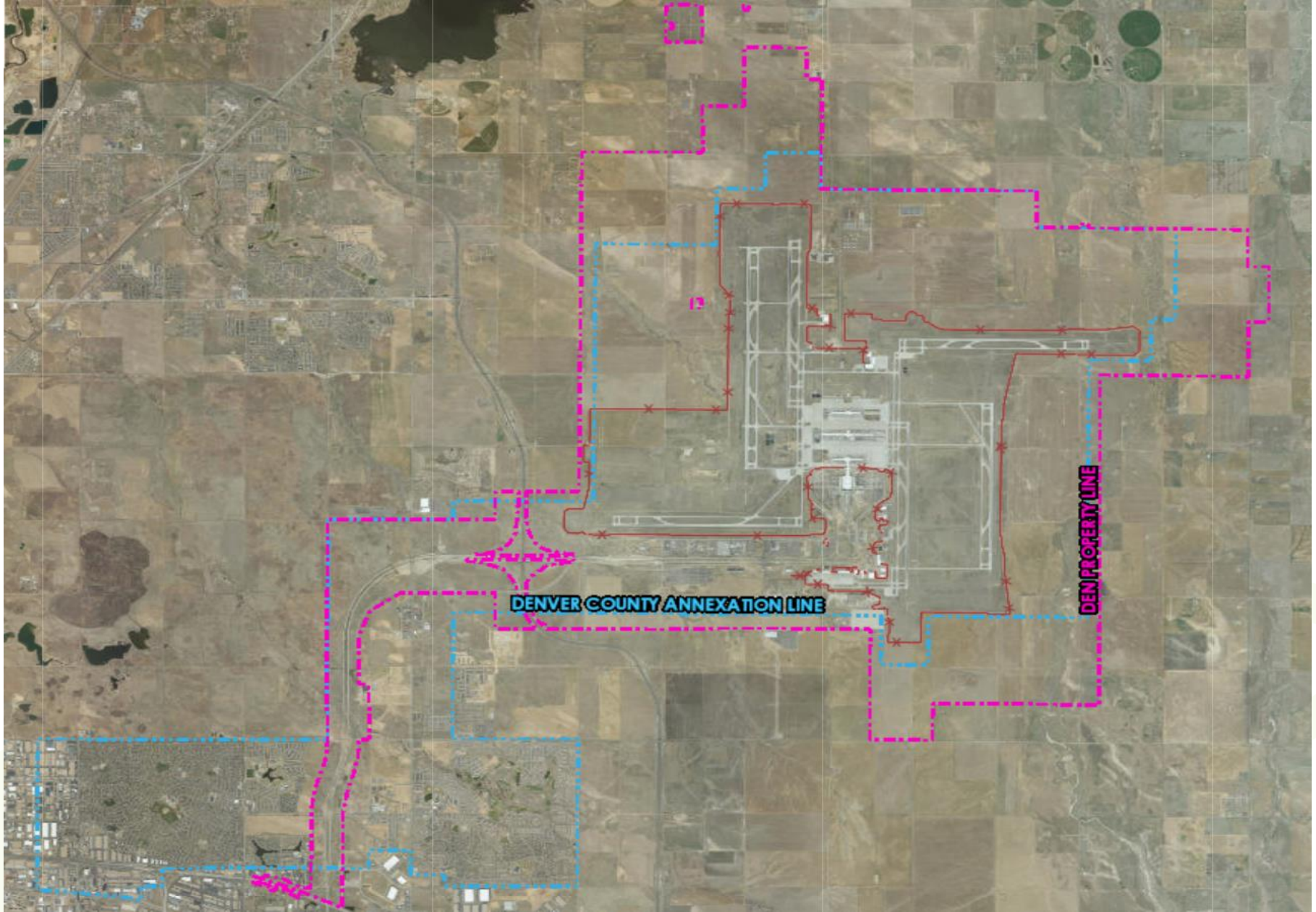
# LANDSIDE ENGINEERING



- What we do:
  - Roads, parking lots, bridges (generally) outside the security fence
  - Drainage & wet utility systems
- Who we are:

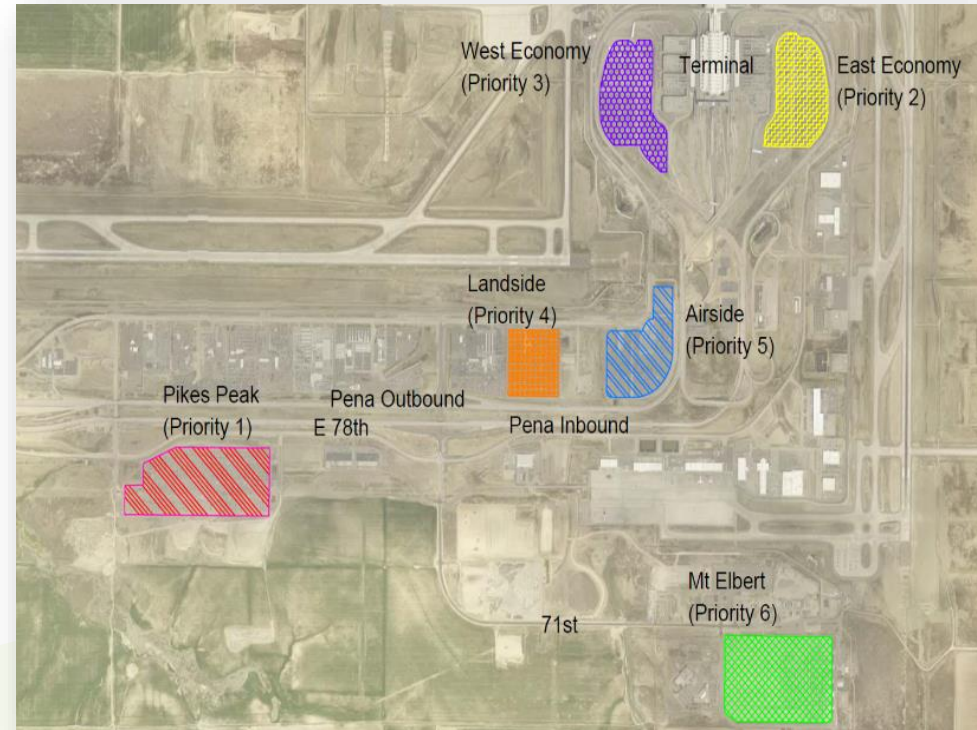


# LANDSIDE ENGINEERING



# DESIGN: PARRC

- Overall program evaluation of six (6) DEN Parking lots, identifying existing and projected conditions
  - Prioritized design and construction of parking lot projects for the next 7-10 years
- Scope includes: reconstruction of the bus lanes, asphalt drive lanes and parking surface areas
  - Update AVI Parking Control systems, upgrade passenger shelters (heat/AC and solar lighting)
- Phasing to maintain ingress/ egress into facility protecting revenue



# DESIGN: STORMWATER CONVEYANCE



- Formerly named “Roadway Erosion Control”
- To comply with CCD’s MS4 Permit
- Condition Assessment of all Storm Water Conveyance Systems at DEN
- Projects will be prioritized based upon condition and CIP funding
- Future work may include erosion mitigation along roadway shoulder, regrading ditches/channels, pipe jetting, maintenance of water quality ponds, installation of new pipe, rip rap, seeding, mulching
- Issued for Bid plans scheduled for Q4 2020



# DESIGN: HERTZ PARKING LOT EXPANSION

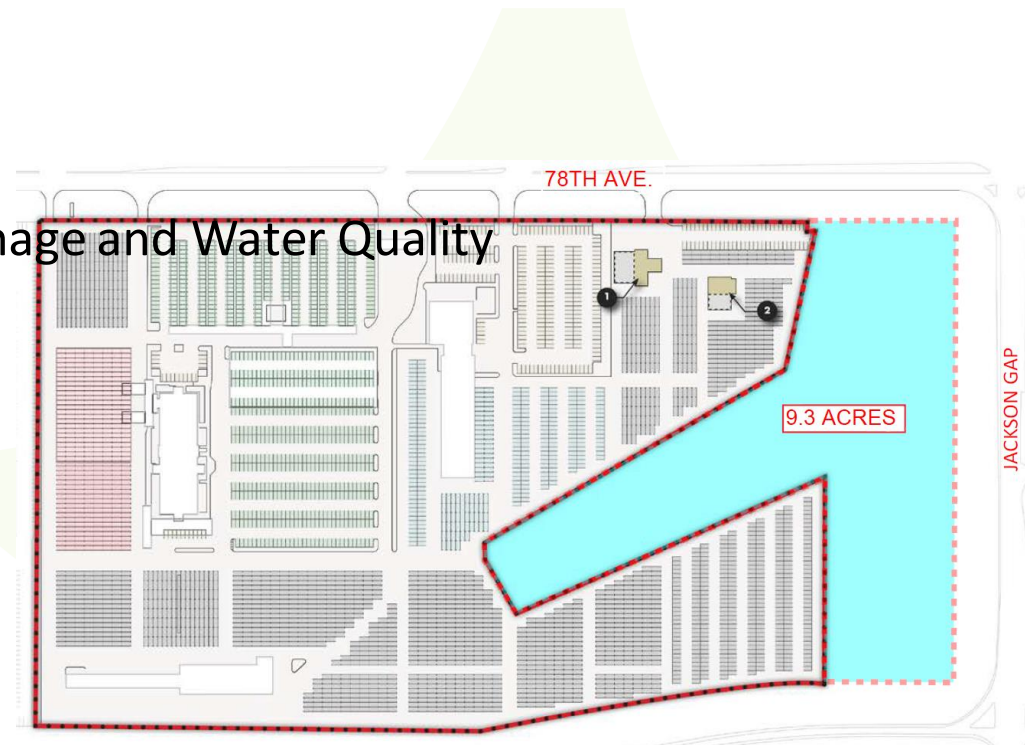


## Scope of Work:

- Master Planning Study
- Expansion of Hertz to meet current and future market share
  - HMA: ~ 16,000 Tons
  - Embankment: ~ 100,000 CY
  - Box Culvert: ~ 2000 LF
- Wetland Impacts (3.5 Acres)
- Electrical, Lighting, Striping, Drainage and Water Quality

## Status/Schedule:

- Design: Q2 2020
- Advertise for Bid: Q2 2020
- Construction Start: Q4 2020
- Construction Finish: Q3 2021



# CONSTRUCT: ANNUAL PAVEMENT REHAB



- Annual repair & maintenance of roadways, including IB/OB Peña Blvd and secondary roadways
- Scope includes: asphalt overlay, partial & full-depth concrete panel replacements, concrete pavement diamond grinding, and bridge expansion joint removal and replacement
- Work on Peña Blvd during night hours only
  - As approved by DEN Terminal Operations
  - Typically: Inbound 8p-4a, Outbound 11p-7a
  - Daily Go/No Go meetings, public notification
- Advertise for bids – Q4 2019

