

# Planning & Development



David Rhodes

Deputy Manager

Planning & Development

# Planning & Development

- Airside and Landside Planning
- Vertical Design and Construction
- Horizontal Design and Construction
- Project Controls and Energy Management
- Environmental

**DENVER INTERNATIONAL AIRPORT  
PLANNING & DEVELOPMENT**

**DAVID RHODES**  
Deputy Manager of Aviation

**MARIE SURRATT**  
Staff Assistant

**BHS & AGTS  
PROGRAMS**

**RICK BUSCH**  
Director of Planning

*AVIATION PLANNING*

*NOISE ABATEMENT*

*GIS*

**REGGIE NORMAN**  
Director of Design Services

*TENANT SERVICES*

*FACILITY SERVICES*

*MECHANICAL*

*ELECTRICAL*

*ENVIRONMENTAL  
GRAPHICS*

**MIKE STEFFENS**  
Director of Construction

*AIRSIDE  
CONSTRUCTION*

*LANDSIDE CIVIL*

*LANDSIDE  
CONSTRUCTION*

*UTILITIES/WATER  
QUALITY*

*SURVEY*

*PMISS CONTRACT*

**VACANT**  
Director of Environmental  
Programs

*FACILITY COMPLIANCE*

*PLANNING*

*WATER MANAGEMENT*

**WOODS ALLEE**  
Director Project Controls  
& Energy Management

*PROJECT CONTROLS*

*SCHEDULING*

*ESTIMATING*

*PROJECT  
INFORMATION  
SYSTEMS*

*ENERGY  
MANAGEMENT*

*RECORDS  
MANAGEMENT*

*BAGGAGE*

*TRAIN*

Last Revised  
13-Nov-12

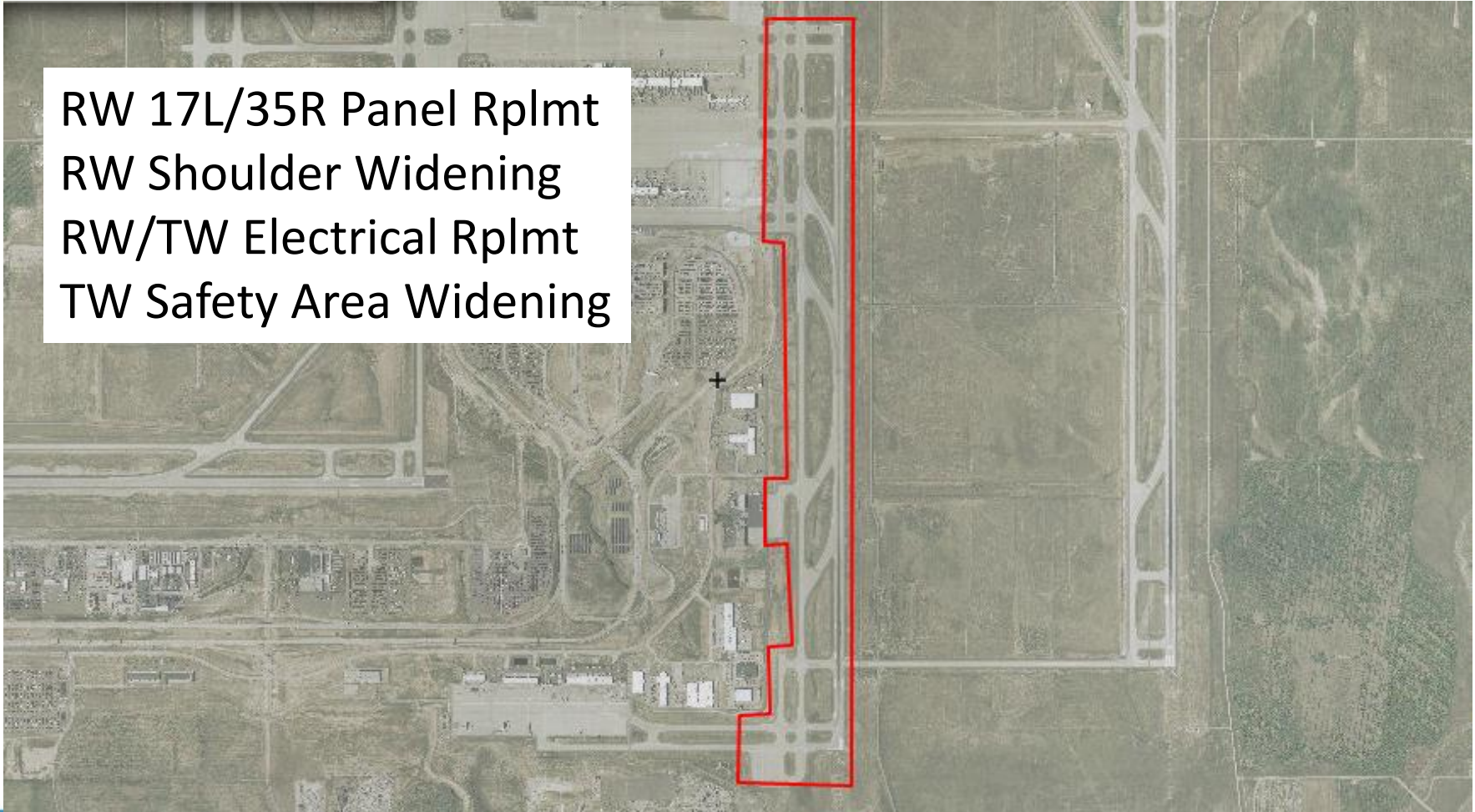
# Project Management

- Design Contract Management
- Construction Contract Management
- Service Contracts

# Procurement of Services

- 90 Day List – FlyDenver.com
- Design Services
  - Single Project RFQ/RFP
  - On-Call RFQ/RFP
- Construction Contracts
  - Single Project
    - Request for Bid
    - RFQ/RFI Design-Build, CMGC
  - On-Call GC or Craft

RW 17L/35R Panel Rplmt  
RW Shoulder Widening  
RW/TW Electrical Rplmt  
TW Safety Area Widening





## Glycol Facility Drainage Improvements

An aerial photograph of an airport terminal and surrounding infrastructure. A white rectangular text box is overlaid on the lower-left portion of the image. The text inside the box reads "78th Ave Traffic Signal Replacement". The background shows a large terminal building, parking lots, and various airport facilities. A black crosshair is visible on the terminal building. Four red squares are marked on the horizontal road (78th Ave) running across the middle of the image, indicating the locations of traffic signal replacements. The top of the slide has a solid blue header, and the bottom has a blue footer with a white scalloped edge.

## 78<sup>th</sup> Ave Traffic Signal Replacement





# 71<sup>st</sup> Ave. Widening and Resurfacing

# Additional Projects

- Mod 4 East Parking Garage – D/B
- Glycol Facility Drainage Improvements
- Concourse B PCA Replacements
- Terminal AHU Upgrades
- HVAC Controls Upgrades

# Planning & Development

David Rhodes

Deputy Manager

Planning & Development

