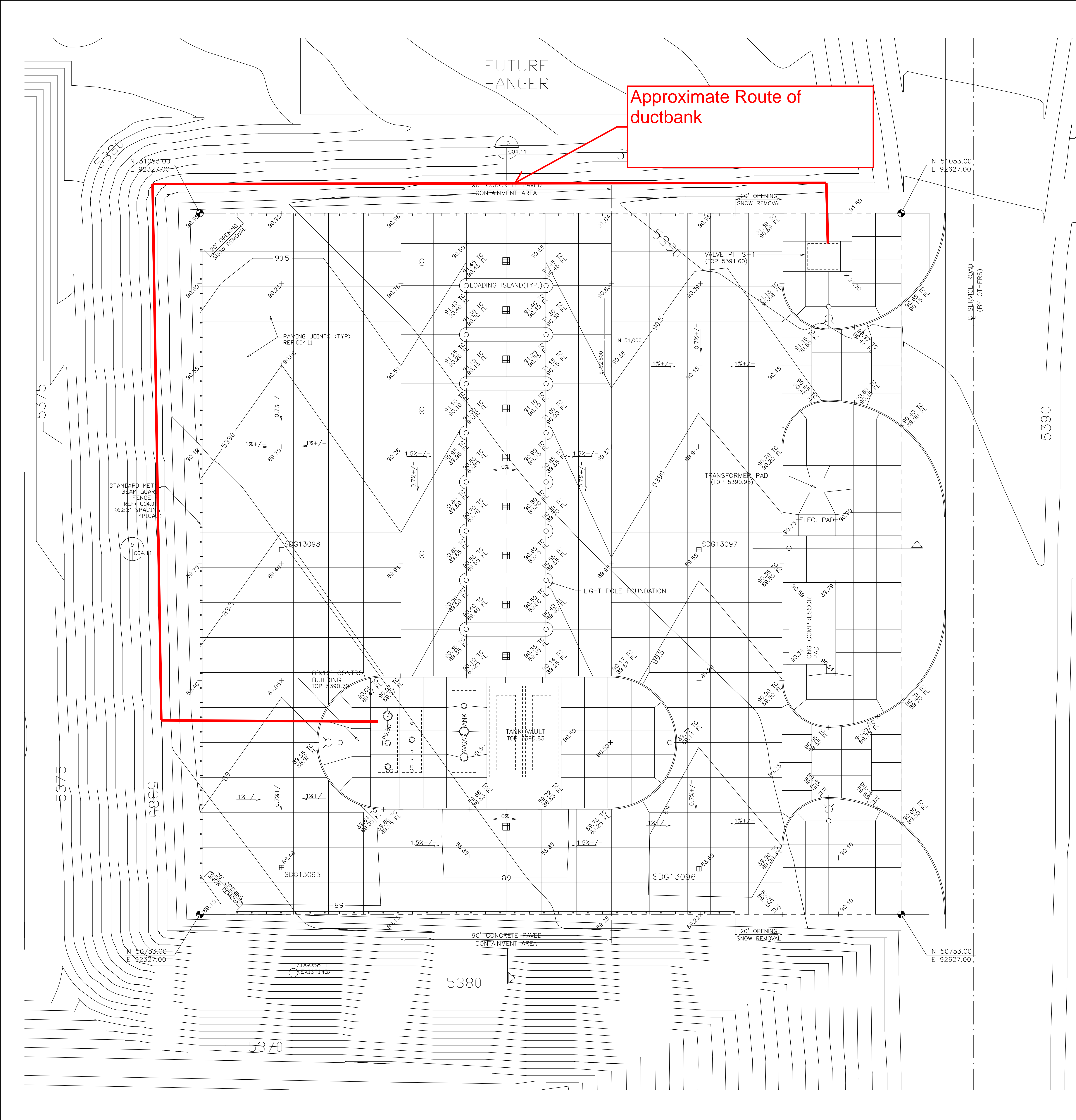


Approximate Route of
ductbank

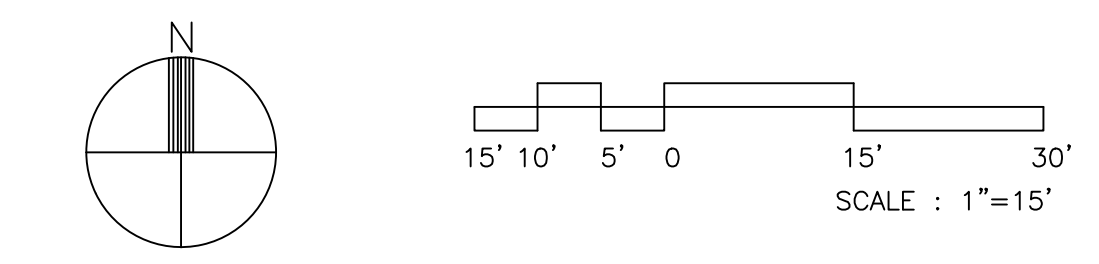


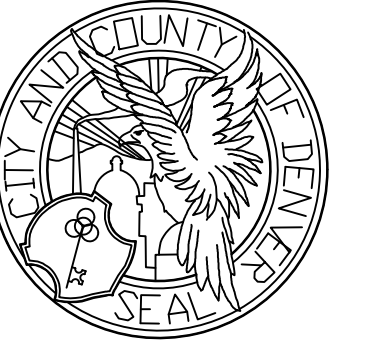
1. ALL WORK SHALL BE IN CONFORMANCE WITH THE MOST RECENT D.I.A. STANDARDS AND SPECIFICATIONS.
2. EXISTING TOPOGRAPHY SHOWN IS PER PLANS PREPARED BY HDR ENGINEERING FOR CONTRACT E-129A.
3. THE CONTRACTOR IS TO VERIFY EXISTING CONDITIONS BEFORE BEGINNING CONSTRUCTION.
4. REFER TO SHEET C04.05 FOR 6' LOADING ISLAND CONSTRUCTION DETAILS.

NOTE:
THE INFORMATION SHOWN ON THIS DRAWING IS TO BE USED FOR REFERENCE PURPOSES ONLY. IT PROVIDES A GENERAL UNDERSTANDING OF THE EXISTING SYSTEM AND ITS USE IS LIMITED TO THE REQUIRED DEMOLITION OR ALTERATION WORK.

THIS DRAWING HAS BEEN ALTERED FROM ITS ORIGINAL SCALE. USE GRAPHIC SCALES, IF PROVIDED, FOR DIMENSIONING.

1 SOUTH CARGO FUELING - PAVING & GRADING PLAN
C01.21





Swanson Rink, Inc.
CONSULTING ENGINEERS
1801 California Street
Suite 3000
Denver, Colorado 80202
303.733.0721
PRIME CONSULTANT

ROBERT AND COMPANY
96 Poplar Street, N.W.
Atlanta, Georgia 30335-6501
FUELING SYSTEM CONSULTANT

BOVAY/McGINTY, INC.
1300 Post Oak Blvd., Suite 300
Houston, Texas 77056
FUELING SYSTEM CONSULTANT

FRASIER ENGINEERING
CIVIL ENGINEERS

THE SHEFLIN GROUP, INC.
STRUCTURAL ENGINEERS

ARCHITECTURE 2000
ARCHITECTS

AGUIRRE ENGINEERS
GEOTECHNICAL INVESTIGATION

CORRPRO COMPANIES, INC.
CORROSION PROTECTION

DEMAND CONSTRUCTION
SCHEDULING & COST ESTIMATING

ISSUE RECORD
NO. BY PURPOSE DATE CKD
1 ISSUED FOR CRO36 15FE93
RECORD DOCUMENT 31MY94

SCALE:
AS NOTED

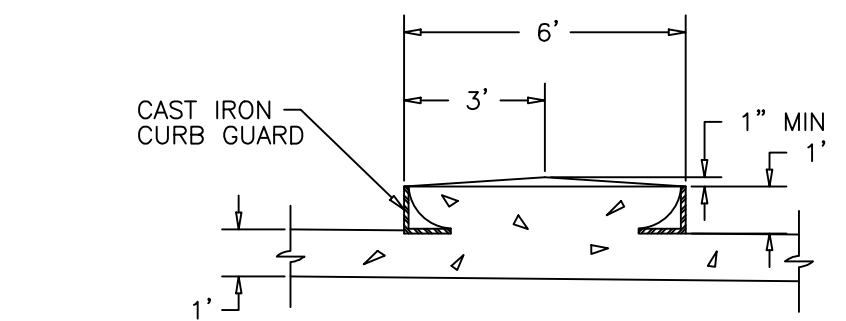
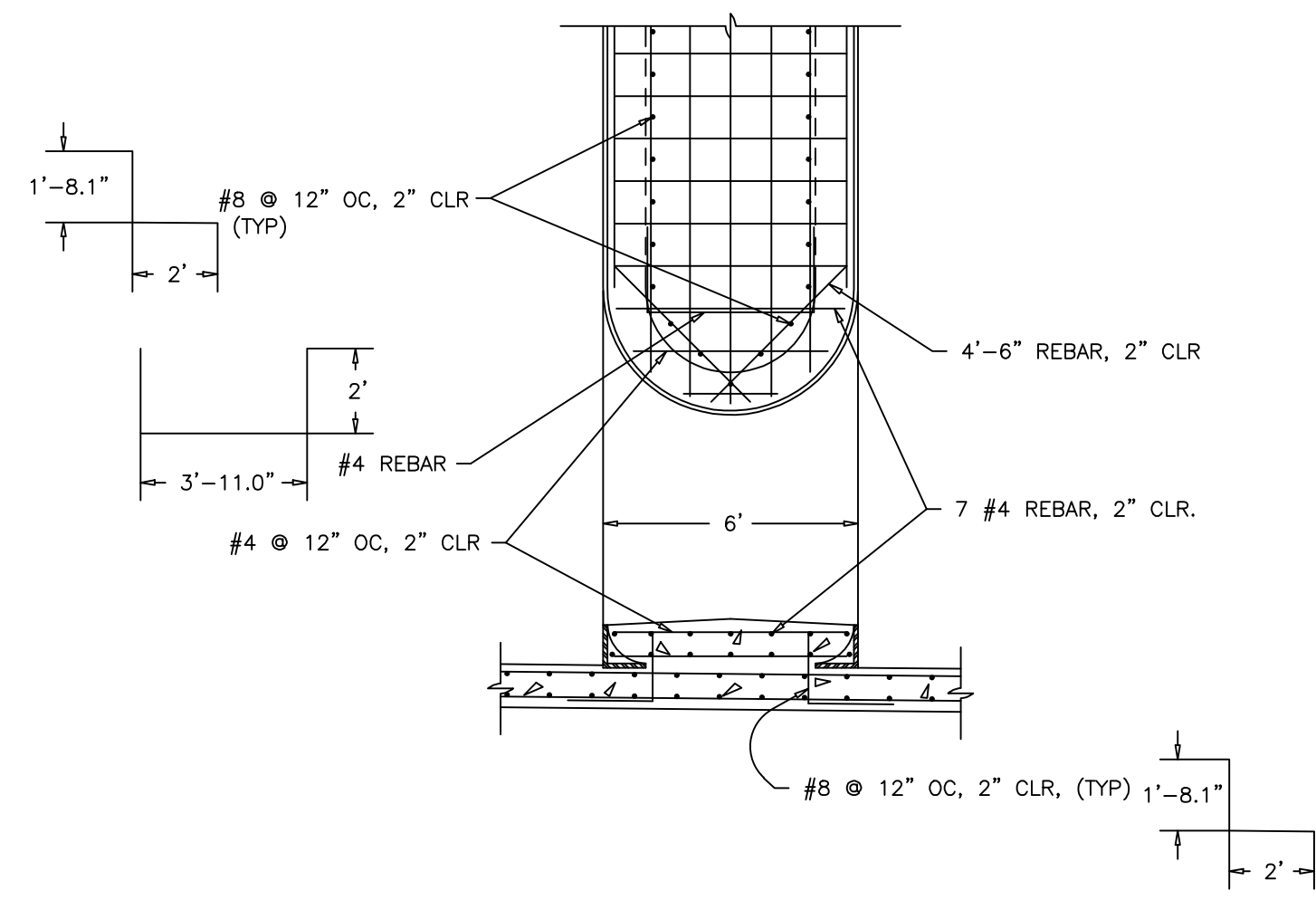
DATE: 15FE93
DRAWN BY: PFH
CHECKED BY: NRH
FAA AIP NO. X
WORK BREAKDOWN NO. 14FBB
DESIGN CONTRACT NO. E361A
CONSTR. CONTRACT NO. F361A
PROJECT NO. 90-202
VOLUME NO. 2
SHEET TITLE

SOUTH CARGO
DETAILS

SHEET NO.
C04.11

CADD FILE NO.
X14FB8E361AF361AR2C440500
CADD LAYER NAMES

RECORD DRAWING
DATE: 31MY94



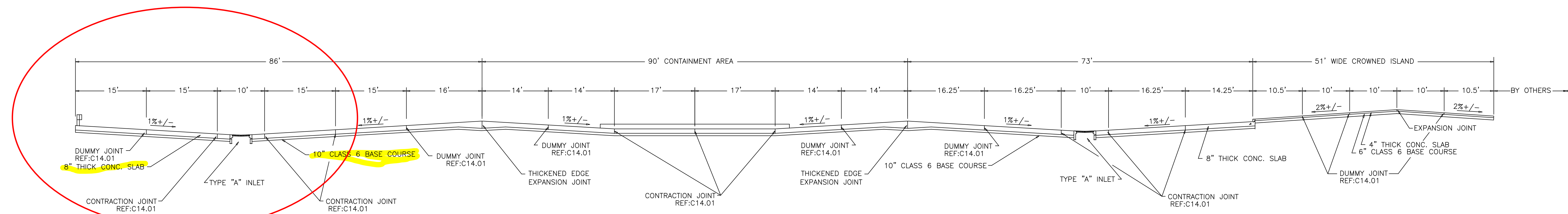
1 FUEL LOADING ISLAND REINF.
C4.11 SEE MECH. PLANS N.T.S.

2 FUEL LOADING ISLAND
C4.11 SEE MECH. PLANS N.T.S.

1 SEE SCHEDULE 17 SHEET C4.06 FOR REINFORCING AROUND OPENINGS. TREAT ISLAND AS A SEPARATE SLAB FOR REINFORCING AROUND OPENINGS.

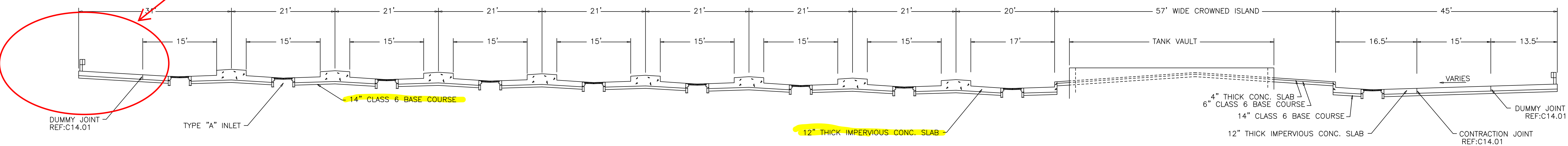
CONCRETE PAD REINFORCEMENT SCHEDULE		
THICKNESS	TOP	BOTTOM
4"	NONE	NONE
8"	#4 @ 12" O.C.E.W.	(CENTERED)
12"	#5 @ 12" O.C.E.W.	#8 @ 12" O.C.E.W.

- LAP SPLICES OF BARS OF DIFFERENT REINF. TYPES SHALL BE MIN. 48 DIAMETERS OF LARGE BAR.
- LAP SPLICES OF BARS OF THE SAME REINF. TYPE SHALL BE 48 DIAMETERS AND SHALL BE STAGGERED 2 LAP LENGTHS MIN.
- EQUIVALENT MECHANICAL SPLICES MAY BE USED IN LIEU OF LAP SPLICES @ CONTRACTOR'S OPTION.



9 SECTION SOUTH CARGO FUELING ISLANDS
C4.11 N.T.S.

Approximate
Areas of Work



10 SECTION SOUTH CARGO FUELING ISLANDS
C4.11 N.T.S.

NOTE:
THE INFORMATION SHOWN ON THIS DRAWING IS TO BE USED FOR REFERENCE PURPOSES ONLY. IT PROVIDES A GENERAL UNDERSTANDING OF THE EXISTING SYSTEM AND ITS USE IS LIMITED TO THE REQUIRED DEMOLITION OR ALTERATION WORK.

THIS DRAWING HAS BEEN ALTERED FROM ITS ORIGINAL SCALE. USE GRAPHIC SCALES, IF PROVIDED, FOR DIMENSIONING.